

CRESSI

SINCE 1946



NEPTO QUICK GUIDE



DOWNLOAD THE COMPLETE
CRESSI INSTRUCTION MANUAL
at: www.cressi.com/manuals

LONG LIFE



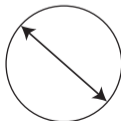
BATTERY

HIGH CONTRAST



DISPLAY

WIDE DIAMETER



EASY ACCESS



MENU



The data provided by the tide graph are not intended for professional use but are to be considered exclusively as representations.

CRESSI SUB don't assumes responsibility for any losses that may result from the use of this watch.

Cressi reserves the right to make changes to the instrument without notice, based on the incessant technological upgrade of its components.

OPERATING BUTTONS



(short press) **SCROLL UP**



- increase one step



(long press):

- enter the function or confirm
- light is available in:
 - top menu
 - chrono mode
 - free mode



SCROLL DOWN (short press)

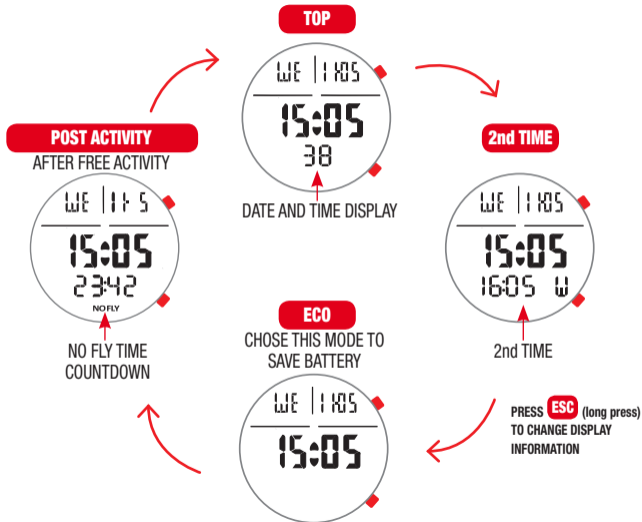
- decrease one step

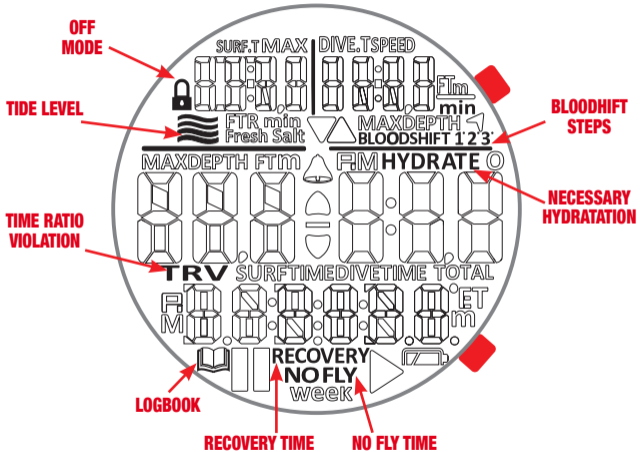


(long press)

- return to the TOP menu
- in free mode: **ESC** session

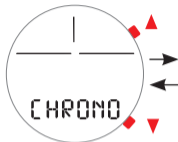
WATCH FACE





MAIN SURFACE MENU

CHRONO



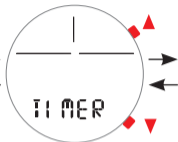
↓ **SEL** TIME
↑ **ESC** HOURS



MIN. SEC.

- ▲ START / STOP
- ▼ LAP / RESET
- ESC** TO RETURN

TIMER



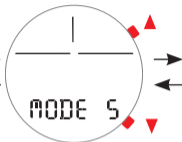
↓ **SEL** TIME
↑ **ESC** HOURS



MIN. SEC.

- SET HOURS
 - SET MINUTES
 - SET SECONDS
- Scroll the SET and confirm **SEL**
- ▲ START / STOP
 - ▼ RESET
 - ESC** TO RETURN

MODE SELECT



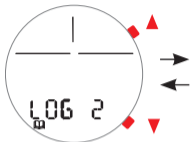
↓ **SEL**
↑ **ESC**

FREE (FREE MODE)
* OFF (LOCK MODE)

▲ Scroll the MODE and confirm **SEL**

* In the off function only the surface function are enable

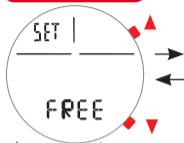
LOGBOOK



↓ **SEL**
↑ **ESC**



FREE SET



↓ **SEL** ↑ **ESC**

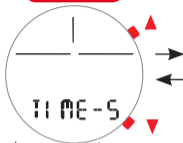
- Taravana Protection Level set
TARAV. OFF/L1-L8
- Bloodshift protection set
BLOODSH. OFF/30-120m(98-349FT)
- Surf Time Alarm set
SURF T. OFF/1':00"-10':00"
- Depth Alarm set
DEPTH AL. 1/2/3/4/5-OFF/10-120m(33-394FT)
- Dive Time Alarm set
DIVE T. OFF/0':10"-6':00"
- Step Depth Alarm set
STEP OFF/2-25m(6-82FT)
- Hydration Time Alarm set
HYD OFF/1-4 HOURS
- Water Salinity set
WATR Fresh/Salt
- Logbook Sample Rate set
LOG.SAM. 0.5-1-2 Second

▲ Scroll the SET
and confirm **SEL**

▲ Scroll +/-
and confirm **SEL**

ESC TO RETURN

TIME SET



↓ **SEL** ↑ **ESC**

 SLEEP ALARM ON/OFF

- SET HOUR
- SET MINUTE
- SET H. 12/24
- SET HOUR
- SET MINUTE
- SET D-M/M-D
- SET DAY or MONTH
- SET MONTH or DAY
- SET YEAR

▲ Scroll the SET
and confirm **SEL**

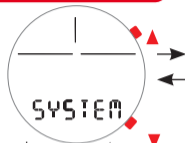
▲ Scroll +/-
and confirm **SEL**

ESC TO RETURN

- SET 2nd TIME ON/OFF

▲ Scroll +/- 30 Min.
and confirm **SEL**

SETTING & INFO SYSTEM



↓ **SEL** ↑ **ESC**

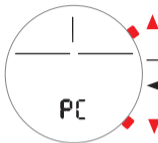


PRE DIVE



SYSTEM MENU

PC-LINK



CONNECT THE INTERFACE

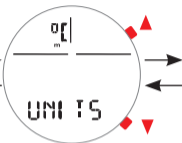


AND DOWNLOAD LATEST
SOFTWARE UPDATES
USB (PC/MAC)



BLUETOOTH Cressi App
AppStore (iOS)
Playstore/ App Gallery
(ANDROID)

CHANGE UNITS



SEL TO CHANGE
(C° m / F-FT)

ESC TO RETURN

HISTORY

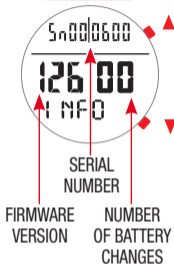


MAX
DEPTH
HISTORY

HOURS
IN USE

ESC TO RETURN

INFO



TIDE-SET

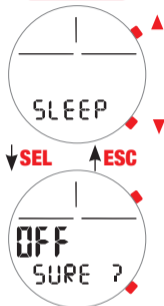


SWITCH TO YES AND PUSH **SEL**
TO SET THE LOCAL NEXT HIGH TIDE TIME



SEL TO CONFIRM **ESC** TO RETURN

SLEEP MODE



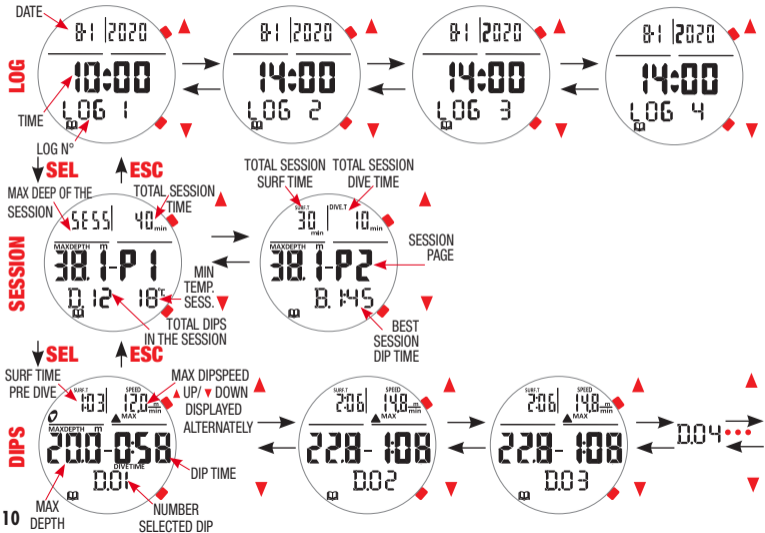
The sleep mode allows you to save battery power in periods of not use the instrument

SWITCH TO YES
AND PUSH **SEL**
TO PUT THE WATCH INTO SLEEP
MODE OR **ESC** TO RETURN



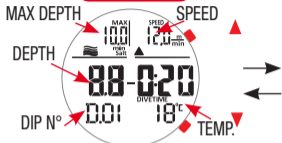
Exit this mode before entering underwater

LOGBOOK MENU FREE MODE

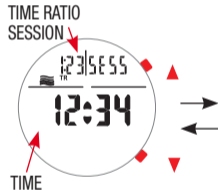
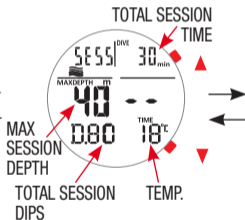


FREEDIVE ACTIVITIES

UNDERWATER



SURFACE



END SESSION?
▲ Scroll YES/NO
▼ and confirm

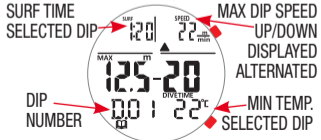
SEL



↓ **SEL** ↑ **ESC**



↓ **SEL** ↑ **ESC**



- Surf Time Alarm **SURF-T** F1-F5 (surf time factor) /1':00"-10':00"/OFF
- Depth Alarm **DEPTH** 1 - 50 m. (3-164 FT)/OFF
- Step Depth Alarm **STEP** 2 - 25 m. (6-82 FT)/OFF
- Dive Time Alarm **DIVE-T** 0':10"-6':00"/OFF

- ▲ Scroll the SET and confirm **SEL**
- ▲ Scroll +/- and confirm **SEL**

12 PRESS ▲ TO SCROLL THE DATA INTO THE SESSION

ESC TO RETURN

BATTERY



LOW BATTERY
(YOU SHOULD CHANGE THE BATTERY SOON)



YOU MUST CHANGE THE
BATTERY
(DIVE FUNCTION IS DISABLED)



***The battery capacity guarantees operation that goes far beyond the guarantee time.
If the watch is opened before 2 years from the date of purchase, the warranty is void.***

Note: _____

Note: _____

CRESSI
SINCE 1946

Via G. Adamoli, 501 - 16165 GENOVA - ITALY
TEL. +39 010 830.79.1 - FAX +39 010 830.79.20
info@cressi-sub.it - www.cressi.com

CE FC