

CRESSI

SINCE 1946



CARTESIO NEON GOA GUIDE



DOWNLOAD THE COMPLETE
CRESSI INSTRUCTION MANUAL
at: www.cressi.com/manuals

LONG LIFE



BATTERY

HIGH CONTRAST



DISPLAY

WIDE DIAMETER



DISPLAY

EASY ACCESS



MENU

MULTI MODE

AIR
EAN
GAGE
FREE

OPERATING BUTTONS



In surface or dive mode:



SCROLL UP (short press)

- increase one step



(long press):

- enter the function or confirm
- light is available in:
 - top menu
 - chrono mode
 - dive mode



*



SCROLL DOWN (short press)

- decrease one step



(long press)

- return to the TOP menu
- switch depth AVG/stopwatch (GAGE mode)



*

(long press) **Gas change** (in NITROX mode)

* Not available for GOA.

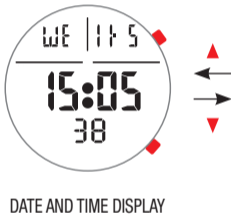
TOP MENU

DESAT

(If the Watch is in desat Mode)



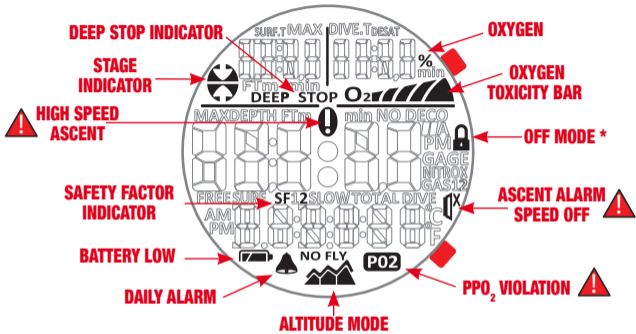
TOP



2nd TIME

(If the 2nd Time is ON)

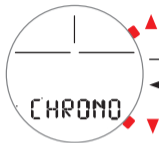




*** If the computer is in OFF (lock) mode.
The underwater diving functions are disabled.**

MAIN SURFACE MENU

CHRONO



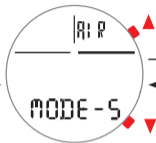
↓ **SEL** ↑ **ESC**



▲ **START / STOP**

▼ **RESET**

MODE SELECT



↓ **SEL** ↑ **ESC**

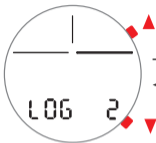
- AIR (AIR MODE)
- EAN (NITROX MODE)
- FREE (APNEA MODE)
- GAGE (GAUGE MODE)
- OFF  (LOCK MODE)

▲ Scroll the Mode and confirm **SEL**



In off (lock) mode, the computer doesn't monitor the body tissue. Don't dive in off (lock) mode with residual desaturation. After a dive in off (lock) mode wait at least 24hours before diving again.

LOGBOOK



↓ **SEL** ↑ **ESC**



DIVE-SET



↓ **SEL** ↑ **ESC**

AIR (AIR MODE)

EAN (NITROX MODE)

FREE (APNEA MODE)

- Deep stop ON /OFF
- Safety Factor SF 0/1/2
- Altitude ALT 0/1/2/3
- PPO₂ 1.2 - 1.6

- Deep stop ON /OFF
- Safety Factor SF 0/1/2
- Altitude ALT 0/1/2/3
- % O₂ 21 - 50% GAS 1
- PPO₂ 1.2 - 1.6 GAS 1
- * % O₂ 21 - 99% GAS 2
- * PPO₂ GAS 2

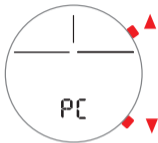
- Surf Time Alarm **SURF-T**
F1-F5 (surf time factor)
/1':00"-10':00"/OFF
- Depth Alarm **DEPTH**
1 - 50 m. (3-164 FT)/OFF
- Step Depth Alarm **STEP**
2 - 25 m. (6-82 FT)/OFF
- Dive Time Alarm **DIVE-T**
0':10"-6':00"/OFF

▲ Scroll the SET and confirm **SEL**
 ▲ Scroll +/- and confirm **SEL**
ESC TO RETURN

* Not available for GOA.

SYSTEM MENU

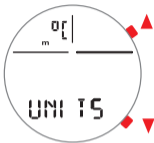
PC LINK



CONNECT THE INTERFACE
AND DOWNLOAD LATEST
SOFTWARE
UPDATES



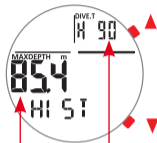
CHANGE UNITS



SEL TO CHANGE UNITS

ESC TO RETURN

HISTORY



MAX
DEPTH
HISTORY

HOURS
IN USE
COUNTER

ESC TO RETURN

INFO

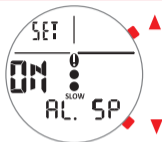


FIRMWARE
VERSION

SERIAL
NUMBER

NUMBER
OF BATTERY
CHANGES

HIGH SPEED ASCENT ALARM



SEL TO CHANGE ON/OFF
ALARM SPEED

ESC TO RETURN



An ascent at too high speed increases the risk of decompression sickness! This function is strictly reserved for instructors who take full responsibility for the deactivation of the high speed ascent alarm (AL.SP).

In any event, when activating this function the computer will show a barred speaker icon during the entire dive.



TISSUE ERASE



SEL **ESC**



SWITCH TO YES
AND PUSH SEL.
FOR 5 SEC.
TO ERASE
THE TISSUE

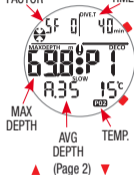


If you decide to erase the tissue nitrogen saturation using the T.ERASE function, the computer will not be able to calculate any successive dives in relation to nitrogen saturation! In any event, do not use this function if 48 hours have not passed since the last dive.

LOGBOOK MENU

AIR (AIR MODE)

SAFETY FACTOR (Page 1) DIVE TIME

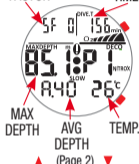


PPO₂ MODE

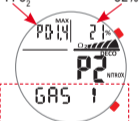


EAN (NITROX MODE)

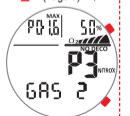
(Page 1)
SAFETY FACTOR DIVE TIME



PPO₂ 02%



▲ (Page 3) ▼



FREE (APNEA MODE)

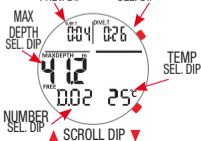
(Page 1)
SESSION TIME



SURF TIME DIVE TIME



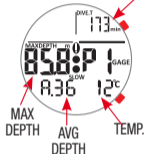
SEL ESC
SURF TIME PREV. DIP DIVE TIME SEL. DIP



NUMBER SEL. DIP
▲ SCROLL DIP ▼

GAGE (GAGE MODE)

(Page 1)
DIVE TIME

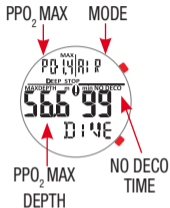


▲ (Page 2) ▼

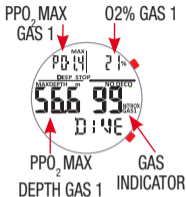


PRE DIVE MENU

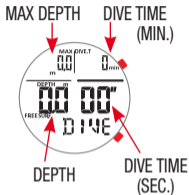
AIR



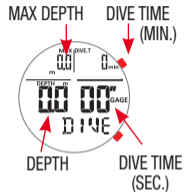
NITROX



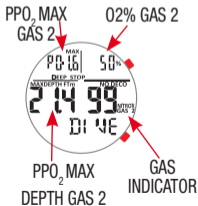
FREE



GAGE



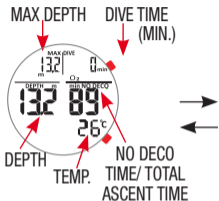
▲ (Page 2) ▼



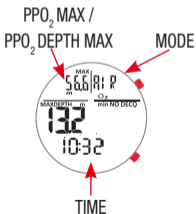
Gas 1-2 Not available for GOA.

DIVE MENU

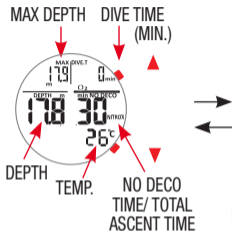
AIR



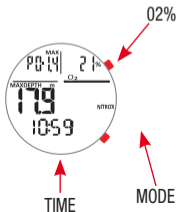
▲ (Page 2) ▼



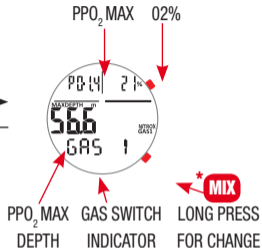
NITROX



▲ (Page 2) ▼

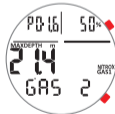


* NITROX GAS SWITCH



* **MIX**
LONG PRESS FOR CHANGE GAS1/2

▲ (Page 2) ▼

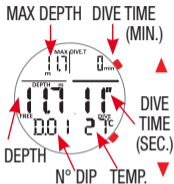


▲ Select the GAS and confirm **SEL**

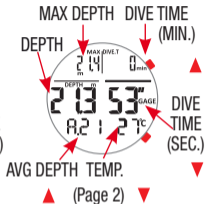
* Not available for GOA.

POST DIVE

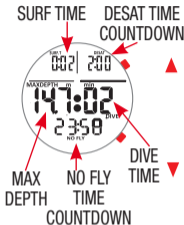
FREE



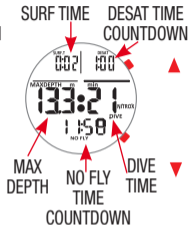
GAGE



AIR

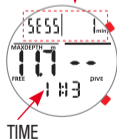


NITROX

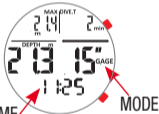


(Page 2)

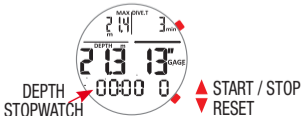
SESSION TIME



(Page 2)



LONG PRESS FOR SWITCH DEPTH/AVG STOPWATCH

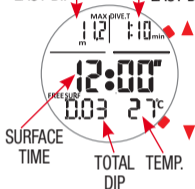


SURFACE

FREE

MAX DEPTH
LAST DIP

DIVE TIME
LAST DIP



▲ (Page 2) ▼

ESC TO END THE SESSION
(SURFACE)



▲ Scroll YES / NO
and confirm **SEL**

BATTERY



LOW BATTERY
(YOU SHOULD CHANGE THE BATTERY SOON)



YOU MUST CHANGE THE
BATTERY
(DIVE FUNCTION IS DISABLED)

Note: _____

CRESSI
SINCE 1946

Via G. Adamoli, 501 - 16165 GENOVA - ITALY
TEL. +39 010 830.79.1 - FAX +39 010 830.79.220
info@cressi-sub.it - www.cressi.com

REV. 04_2019